

MO'TAIL & SPAW®



[PawsandPintsDSM.com](http://PawsandPintsDSM.com)



# MO'TAIL & SPAW®

Who doesn't like a day at the spa? We all enjoy being pampered, so why wouldn't your dog enjoy it too?

- Our highly-trained daycare staff can look after your best friend while you're at work.
- Allow us to take care of your dog(s) next time you're on vacation in one of our oversized suites.
- Let one of our experienced groomers pamper your pooch to a "Best In Show" level.

The Mo'Tail & Spaw at Paws & Pints has all your dog's needs under one WOOF.

## DOG PARK MEMBERS

---

**10% Off** ALL PACKAGES & SERVICES

» Your dog needs to be current on Bordetella, Distemper, Parvo and Rabies vaccinations. **See [PawsandPintsDSM.com](http://PawsandPintsDSM.com) for more details.**



# THE ULTI-MUTT MEMBERSHIPS!

COMBINE THE BEST OF BOTH WORLDS BETWEEN THE DOG PARK AND THE MO'TAIL & SPAW!



## THE TOTAL INDULGENCE MEMBERSHIP<sup>1</sup>

- 2 days of daycare (based on availability)
- 1 Best in Show Groom
- Exclusive P&P events/deals
- Additional dogs, 10% off
- Unlimited dog park access

LAP DOG	S	M	L	XL	GIANT
\$155/M	\$171/M	\$188/M	\$211/M	\$234/M	\$259/M

## PAMPER YOUR POOCH MEMBERSHIP<sup>1</sup>

- 2 days of daycare (based on availability)
- 1 P&P Luxe Bath
- Exclusive P&P events/deals
- Additional dogs 10% off
- Unlimited dog park access

LAP DOG	S	M	L	XL	GIANT
\$135/M	\$143/M	\$151/M	\$159/M	\$167/M	\$175/M

<sup>1</sup>Both packages **include 10% off**

- Additional hotel & spa services
- The Bonetique
- Dog training services
- Food & drink at Your Best Friend's Bar

*Membership grooming and daycare credits do not roll over month to month. Memberships will be charged monthly and can be canceled at any time.*

## SIZE SCALE

LAP DOG	S	M	L	XL	GIANT
1-15 LBS	16-25 LBS	26-50 LBS	51-75 LBS	76-100 LBS	101+ LBS

# SPA SERVICES

## GROOMING CENTER HOURS:

7AM-7PM DAILY

### BEST IN SHOW

- Full body haircut
- Shampoo & conditioner
- Blueberry facial cleanser
- Ear cleaning & plucking
- Nail trim & buff
- Teeth brushing
- Nose & pad moisturizer
- Smell-good spritz
- Fun accessory



LAP DOG	S	M	L	XL	GIANT
\$74	\$94	\$114	\$144	\$174	\$204

### P&P LUXE BATH

- Shampoo & conditioner
- Blueberry facial cleanser
- Complete brush & blowout
- Nail trim & buff
- Ear cleaning & plucking
- Teeth brushing
- Smell-good spritz

LAP DOG	S	M	L	XL	GIANT
\$49	\$59	\$69	\$79	\$89	\$109

### PUPPY PAMPER PACKAGE (4mos-8mos)

- Puppy shampoo & conditioner
- Quick trim (if applicable)
- Gentle brush & dry off
- Nail trim & file
- Smell-good spritz
- Fun accessory

<19 LBS	20-39 LBS	40+LBS
\$39	\$49	\$59

EXIT BATH / WALK-IN (Based on availability)

- Shampoo & conditioner
- Smell-good spritz
- Quick brush & blowout
- Included w/ 10+ night's lodging

LAP DOG	S	M	L	XL	GIANT
\$29	\$39	\$49	\$59	\$69	\$79

MICROBUBBLE THERAPY BATH

- 20-min Microbubble bath
- Shampoo & conditioner, if needed
- Complete brush & blowout
- Choice of therapeutic enzyme
- Lap dog-M: \$20
- L-Giant: \$30

LAP DOG	S	M	L	XL	GIANT
\$44	\$54	\$64	\$74	\$84	\$94

MICROBUBBLE PACKAGE \$385

- 3 Microbubble sessions week 1
- Choice of therapeutic enzyme
- 2 Microbubble sessions week 2
- ALL APPOINTMENTS MUST BE BOOKED WITHIN A MONTH.**
- 1 Microbubble session week 3

P&P PAWDICURE TREATMENT \$35

- Paw soak with epsom salts
- Moisturizing pad cream
- Gentle paw massage
- Nail Pawlish
- Nail trim & buff





**DE-SHED TREATMENT |** Available to add to any bath

Lap Dog-Medium	\$25
Large-Giant	\$50

**A LA CARTE MENU**

Toenail trim & buff	\$19
Ear cleaning & plucking	\$17
Medicated Shampoo	\$20 UPGRADE
Private 1 on 1 grooming	\$24 UPGRADE
Dog-safe color accents	\$19 PER COLOR
P&P bandana	\$5
Feather extensions	\$24
Nail pawlish	\$24
After hours pick up/drop off	\$15
Sanitary trim (face, feet & fanny)	\$25
Face trim	\$10
Feet trim	\$10
Fanny trim	\$10

**PLEASE SEE OUR WEBSITE  
FOR INFORMATION ABOUT  
OUR NO-SHOW, DIFFICULT  
TEMPERAMENT AND  
DEMATTING POLICIES.**

## WHAT IS MICROBUBBLE THERAPY?

Microbubble therapy is a calm bathing experience where water is infused with billions of micro-sized, oxygen-rich bubbles. When combined with Ozone Sterilization, microbubble therapy becomes a powerful oxidant, attacking bacteria, viruses, and much more.

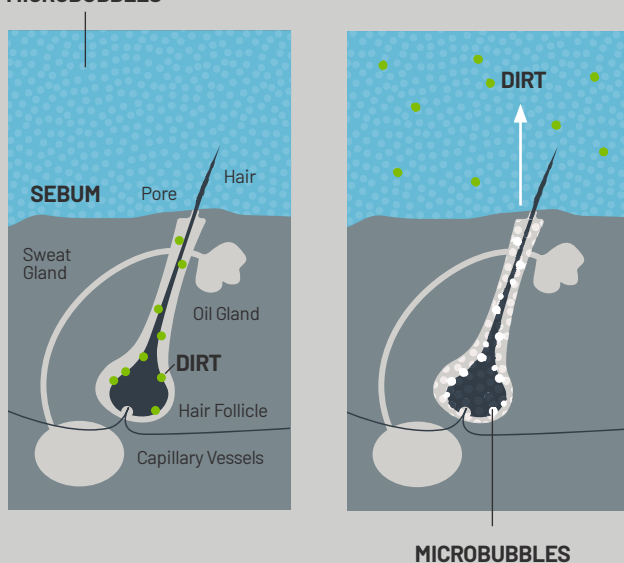
### WHAT CAN MICROBUBBLES DO FOR MY DOG?

The bubbles can remove trapped dirt, bacteria, and yeast. Oily secretion, referred to as sebum, is released reducing odors. As the bubbles burst, they help to clean and hydrate your dog's skin creating a silky-smooth coat that is healthier than ever. Microbubbles penetrate deep into the skin relieving rashes or sensitive areas causing irritation using nothing but water.

### WHICH DOGS ARE IDEAL FOR MICROBUBBLE THERAPY?

The short answer is that any dog can benefit from microbubble therapy, however, dogs who suffer from hot spots, itchy skin, dandruff, inflammation, skin infections, allergies, and excessive shedding or hair loss can benefit the most. Microbubble therapy can also help relieve stress and anxiety.

#### MICROBUBBLES



# DOGGY DAYCARE & HOTEL ACCOMMODATIONS

## LODGING HOURS

**PICK-UP:** 7-11AM **DROP OFF:** 1-6PM

## DAYCARE HOURS

**M-SAT:** 6AM – 6PM

HALF-DAY DAYCARE MORNING: **6AM – 12PM**

HALF-DAY DAYCARE EVENING: **12 – 6PM**

**SUN:**

HOURLY DAYCARE: **9AM – 5PM (\$12/hour)**

## DAYCARE PRICES

**FULL-DAY \$39** /PER DOG

When combined with hotel stay: **Full-day \$31**

**HALF-DAY \$29** /PER DOG

When combined with hotel stay: **Half-day \$21**

### FULL-DAY DAYCARE PACKAGES:<sup>4</sup>

5 DAY	10 DAYS	20 DAYS	50 DAYS
\$179	\$349	\$639	\$1439

### HALF-DAY DAYCARE PACKAGES:<sup>4</sup>

5 DAY	10 DAYS
\$134	\$244

## DAY LODGING PRICES

**FULL-DAY \$44** /PER DOG

### DAY LODGING PACKAGES:<sup>4</sup>

5 DAY	10 DAYS	20 DAYS
\$187	\$374	\$704



## DAY LODGING INCLUDES

---

- Bathroom Breaks
- Fresh Water
- Private Suite
- Kong/LickiMat
- Entree from the kitchen
- Add-ons available

## DOGGY DAYCARE INCLUDES

---

- Indoor & outdoor play yards
- Supervised playtime
- Plenty of shade & fresh water
- Socialization with others
- Naptime
- Fun, playful atmosphere
- Plenty of potty breaks
- Engaging activities

## WHAT YOU SHOULD BRING FOR DOGGY DAYCARE

---

- Proof of vaccinations
- Lunch if applicable
- Leash & collar

## DAYCARE ADD-ONS

---

- Entree from the kitchen \$7
- Field Trip \$10 (Mon/Wed/Thurs)<sup>5</sup>
- Photo postcard \$5
- Weekend Mental Enrichment \$10 (Fri/Sat/Sun)
- Kong or LickiMat \$5

## PICK-UP POLICY

If your dog(s) isn't collected from a half-day of AM daycare by 12PM, you will be charged for a full-day of daycare. If your dog isn't collected from daycare by 6PM you will be charged a \$15 fee. Pickup after 7PM will result in the charge for an overnight stay.

## HOTEL ACCOMMODATIONS

### OVERNIGHT ACCOMMODATIONS INCLUDE

---

- 24-Hour staffing
- Daily housekeeping
- Bathroom breaks
- Safe, secure, friendly atmosphere
- Daily feedings
- Exit bath (10+ night stay required)
- Fresh water at all times
- Medicine administering (if applicable)

### WHAT YOU SHOULD BRING FOR AN OVERNIGHT STAY

---

- Proof of vaccinations (annually)
- Leash & collar
- Dog food (pre-portioned meals only)<sup>6</sup>
- Medications (if applicable)<sup>7</sup>
- Clean blanket (if desirable)
- Up to 2 toys<sup>8</sup>

<sup>4</sup> All package sales are non-refundable.

<sup>5</sup> Field trips are either trips to the backyard or agility and mental enrichment activities.

<sup>6</sup> Each meal must be pre-portioned and bagged in advance.

<sup>7</sup> All medications must be in their original containers and if prescribed, done so recently.

<sup>8</sup> Anything that is deemed a choking hazard will not be permitted.



## BASIC SUITE (100lb Weight Limit)

- 4'x6' space
- Elevated dog bed

	1 DOG	2 DOGS <sup>9</sup>
1 NIGHT	\$49	\$79

## DELUXE SUITE (Dogs under 50lbs)

- 4'x4' fully tiled space
- Plush bedding
- Elevated dog bed

	1 DOG	2 DOGS <sup>9</sup>
1 NIGHT	\$44	\$74

## LUXURY SUITE (Dogs of any size)

- 4'x8' luxury suite
- 25" flat screen TV
- Elevated dog bed
- Camera access<sup>10</sup> (\$7/day)
- Plush bedding

	1 DOG	2 DOGS <sup>9</sup>
1 NIGHT	\$64	\$94

<sup>9</sup> In order to receive a multi-dog discount, dogs must be from the same household and be able to safely room together. Not all breeds qualify due to size. If dogs must be separated during their stay, you will be charged for an additional room. Deluxe suites may not be able to accommodate multiple dogs.

<sup>10</sup> Camera access is based on availability, not all suites are equipped with camera access.

## ROOM SERVICE MENU<sup>11</sup>



• Entree from the Kitchen	<b>\$7 EACH</b>
• Dry food (Open Farm Ancient Grain or Grain Free)	<b>PRICE BASED ON WEIGHT</b>
• Wet food (Open Farm Harvest Stew)	<b>PRICE BASED ON WEIGHT</b>
• Freeze-dried raw (Open Farm Grass-fed Beef)	<b>\$10 /MEAL</b>
• Open Farm Freeze-dried Treats (Chicken, Beef, Turkey, Pork or Cod)	<b>\$12 /BAG</b>
• Frozen Kong or LickiMat (Peanut Butter or Sunflower Butter)	<b>\$5 /TREAT</b>
• No-hide dog chews (Earth Animal Chicken or Salmon)	<b>\$5 /CHEW (S) \$14 /CHEW (M/L)</b>
• Digestive probiotic (WINPRO)	<b>\$4 /DAY</b>
• Supercan Collagen Chews	<b>\$15 /CHEW (S) \$25 /CHEW (M/L)</b>

## ASK ABOUT ADD-ONS FOR DAY LODGING!

### ADDITIONAL HOTEL ADD-ONS<sup>10</sup>

• Full-day of daycare	<b>\$31 /DAY</b>
• Half-day of daycare	<b>\$21 /DAY</b>
• Extra bathroom breaks	<b>\$10 /DAY</b>
• One 20 Minute Walk or Playtime	<b>\$15</b>
• Two 20 Minute Walks or Playtimes	<b>\$25</b>
• Daily photo postcard	<b>\$5 /DAY</b>
• Nightly turndown (love and affection before bed)	<b>\$10 /NIGHT</b>
• Live webcam access <sup>10</sup>	<b>\$7 /DAY</b>
• Field Trip (Mon/Wed/Thurs) <sup>12</sup>	<b>\$10 /DAY</b>

<sup>10</sup> Camera access is based on availability, not all suites are equipped with camera access.

<sup>11</sup> Menu pricing and selections are subject to change. Please visit our website for the most up to date prices.

<sup>12</sup> Field Trip is weather-dependant.

# PAWS PICKUP

DES MOINES METRO DOG TAXI

GET YOUR  
FIRST RIDE  
FREE!

Paws & Pints' newest service, offering dog taxi transportation in the Des Moines Metro. Perfect for Pickup and drop-off for Mo'Tail & Spaw appointments, ride share when your pup can't join you for your trip, delivery for purchases \$150+ from The Bonetique, and more!

Visit [www.PawsAndPintsDSM.com/Paws-Pickup](http://www.PawsAndPintsDSM.com/Paws-Pickup) for more details!

PRICING
0-3 MILES: \$5
>3 MILES: \$2/MILE
2ND & 3RD DOG: +\$10/DOG
SAME DAY SERVICE: +\$15
EARLY/LATE PICKUP OR DROP OFF: +\$10
HOURS: MON-FRI 7AM-7PM   SAT 9AM-5PM   CLOSED SUNDAY

Mo'Tail & Spaw  
6218 Willowmere Dr. Ste. B  
Des Moines, IA 50321  
**515.969.BARK**

 @PAWSANDPINTSDSM

 @PAWSANDPINTSDSM

 @PAWSANDPINTSDSM

 Paws & Pints

Download the Paws & Pints app on



[PAWSANDPINTSDSM.COM](http://PAWSANDPINTSDSM.COM)

Printed March 2025